



Architectural Details



www.orstedusa.com

Fiber Cement Trims & Reveals

Architectural Details Legend

Horizontal Applications

Horizontal	Page 5
Reveal Horizontal	Page 6
Starter	Page 7
Drip Cap	Page 8-10
Slim Drip Cap	Page 8-10

Vertical Applications

Reveal Vertical	Page 13
H Vertical	Page 13
Snap Reveal Vertical	Page 14
Reveal Vertical Transition	Page 14

Terminating Applications

J Channel	Page 17-20
F Channel	Page 17-20
J Channel Lap	Page 17-20

Outside Corner Applications

X Outside Corner	Page 23
Captured Outside Corner	Page 23
Captured Outside Corner Lap	Page 23
X Outside Corner Lap	Page 24
X Outside Corner Transition	Page 24
Obtuse Outside Corner	Page 25

Inside Corner Applications

Captured Inside Corner	Page 28
Sharp Inside Corner	Page 28
Captured Inside Corner Lap	Page 29
Captured Inside Corner Transition	Page 29
Acute Inside Corner	Page 30

Architectural Finishes

Architectural Finishes	Page 32
------------------------	---------

Western USA

Patrick O'Neill
404.376.0243
patrick@orstedusa.com
6779 W. Targee St.
Boise, ID 83709



Eastern USA

Jonathan Kurtz
404.431.9605
jonathan@orstedusa.com
2272 Mabros Ind. Pkwy.
Ellenwood, GA 30294



Architectural Details

Horizontal Applications



www.orstedusa.com

Horizontal Design Options



FbC-Starter



FbC-P-Hoz



FbC-P-Reveal Hoz



FbC-Drip Cap



FbC-Slim Drip Cap

Horizontal Architectural Details

This section highlights Orsted’s fiber cement trims and reveals in a variety of standard horizontal conditions. We have made assumptions that are based on a number of standard project conditions that are not all encompassing and can be customized on a project basis.

We have primarily shown horizontal details at a variety of abutting and overlapping conditions. Typically, a horizontal trim is installed continuously and is designed to overlap the face of the vertical components providing consistent and clean joints at intersecting conditions.

Orsted believes that the impact of an error increases substantially as an error moves from the digital environment to the jobsite. We would love to help save your project **Time and Money** by consulting on project specific details and conditions.



Horizontal Design Options



FbC-Starter



FbC-P-Hoz



FbC-P-Reveal Hoz



FbC-Drip Cap



FbC-Slim Drip Cap

Horizontal Architectural Details

Description: Horizontal with 1/4" panel clearance and 3/8" exposed flange

Siding Type: 5/16" fiber cement panel

Part Number: FbC-P-Hoz

Description: Horizontal with 1/2" panel clearance and 3/8" exposed flange

Siding Type: 5/16" fiber cement panel

Part Number: FbC-P-Hoz

Description: Horizontal used as a starter with 1/4" panel clearance and 3/8" exposed flange

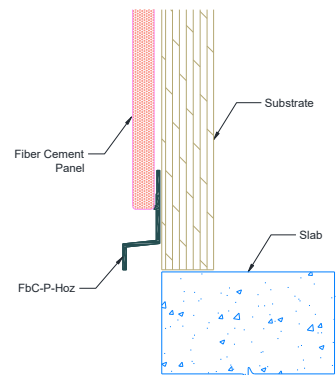
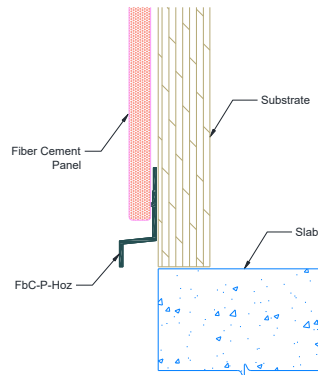
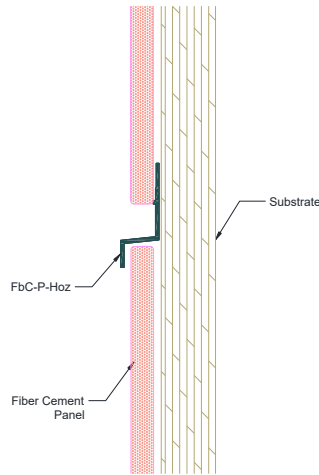
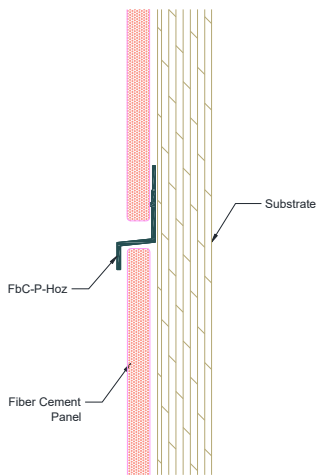
Siding Type: 5/16" fiber cement panel

Part Number: FbC-P-Hoz

Description: Horizontal used as a starter with 1/2" panel clearance and 3/8" exposed flange

Siding Type: 5/16" fiber cement panel

Part Number: FbC-P-Hoz



Horizontal Design Options



FbC-Starter



FbC-P-Hoz



FbC-P-Reveal Hoz



FbC-Drip Cap



FbC-Slim Drip Cap

Horizontal Architectural Details

Description: Horizontal with 1/2" reveal, 1/4" panel clearance, and 3/8" exposed flanges

Siding Type: 5/16" fiber cement panel

Part Number: FbC-P-Reveal Hoz

Description: Horizontal with 1/2" reveal, 1/2" panel clearance, and 3/8" exposed flanges

Siding Type: 5/16" fiber cement panel

Part Number: FbC-P-Reveal Hoz

Description: Horizontal used as a starter with 1/2" reveal, 1/4" panel clearance, and 3/8" exposed flanges

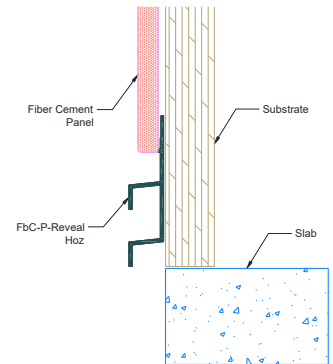
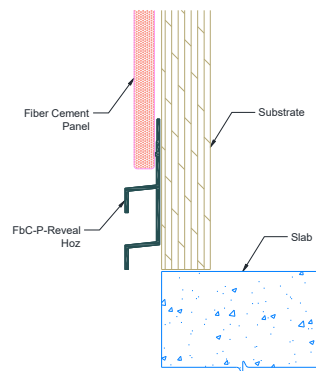
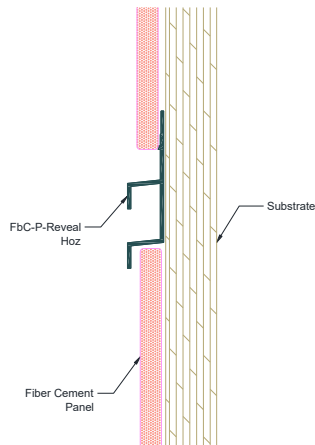
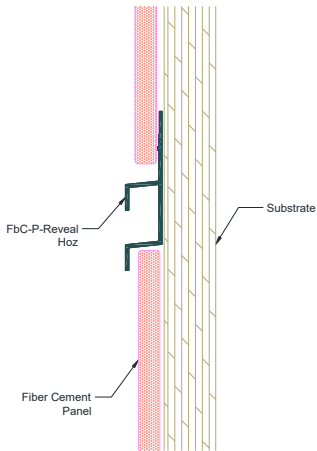
Siding Type: 5/16" fiber cement panel

Part Number: FbC-P-Reveal Hoz

Description: Horizontal used as a starter with 1/2" reveal, 1/2" panel clearance, and 3/8" exposed flanges

Siding Type: 5/16" fiber cement panel

Part Number: FbC-P-Reveal Hoz



Horizontal Design Options



FbC-Starter



FbC-P-Hoz



FbC-P-Reveal Hoz



FbC-Drip Cap



FbC-Slim Drip Cap

Horizontal Architectural Details

Description: Starter transition from fascia to soffit with 1/4" panel clearance and 1/2" exposed flange

Siding Type: 5/16" fiber cement panel

Part Number: FbC-Starter

Description: Starter transition from fascia to soffit with 1/2" panel clearance and 1/2" exposed flange

Siding Type: 5/16" fiber cement panel

Part Number: FbC-Starter

Description: Starter with 1/4" panel clearance and 1/2" exposed flange

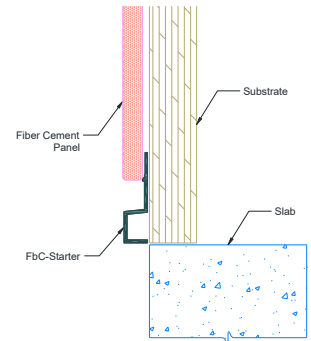
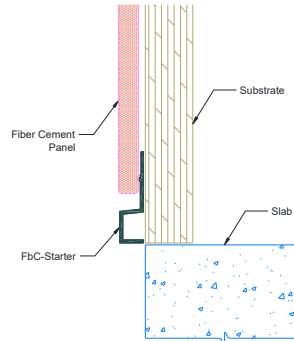
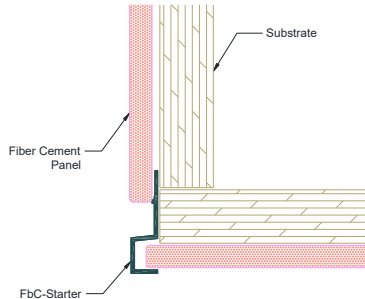
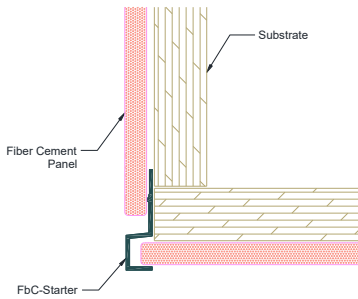
Siding Type: 5/16" fiber cement panel

Part Number: FbC-Starter

Description: Starter with 1/2" panel clearance and 1/2" exposed flange

Siding Type: 5/16" fiber cement panel

Part Number: FbC-Starter



Horizontal Design Options



FbC-Starter



FbC-P-Hoz



FbC-P-Reveal Hoz



FbC-Drip Cap



FbC-Slim Drip Cap

Horizontal Architectural Details

Description: Drip Cap/flashing at 5/4 band board with 1/4" panel clearance and 3/8" exposed flange

Siding Type: 5/16" fiber cement panel

Part Number: FbC-Drip Cap

Description: Drip Cap/flashing at 5/4 band board with 1/2" panel clearance and 3/8" exposed flange

Siding Type: 5/16" fiber cement panel

Part Number: FbC-Drip Cap

Description: Drip Cap/flashing at 4/4 band board with 1/4" panel clearance and 7/16" exposed flange

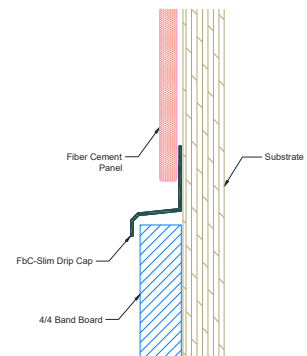
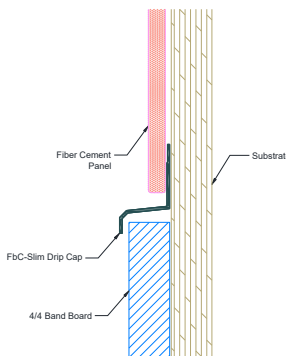
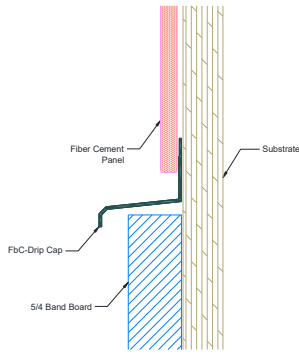
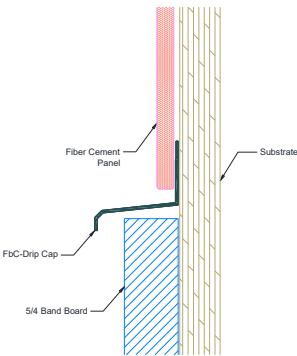
Siding Type: 5/16" fiber cement panel

Part Number: FbC-Slim Drip Cap

Description: Drip Cap/flashing at 4/4 band board with 1/2" panel clearance and 7/16" exposed flange

Siding Type: 5/16" fiber cement panel

Part Number: FbC-Slim Drip Cap



Horizontal Design Options



FbC-Starter



FbC-P-Hoz



FbC-P-Reveal Hoz



FbC-Drip Cap



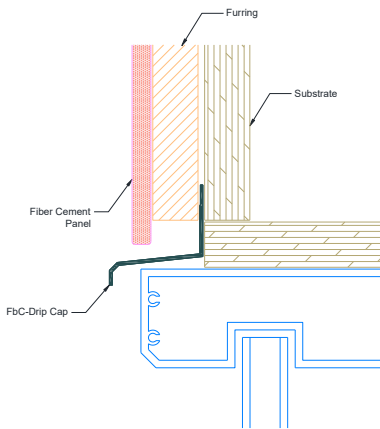
FbC-Slim Drip Cap

Horizontal Architectural Details

Description: Drip Cap/flashing at window header with 3/4" furring and 3/8" exposed flange

Siding Type: 5/16" fiber cement panel

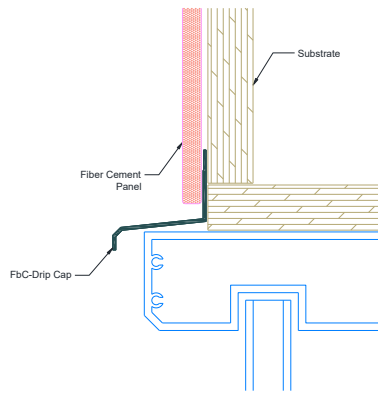
Part Number: FbC-Drip Cap



Description: Drip Cap/flashing at window header with 3/8" exposed flange

Siding Type: 5/16" fiber cement panel

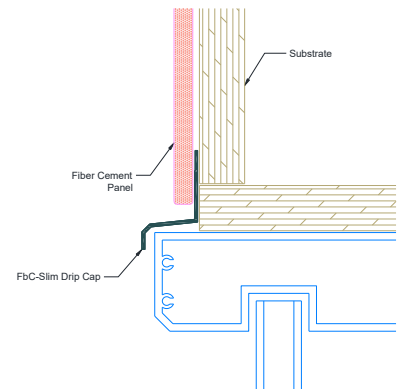
Part Number: FbC-Drip Cap



Description: Drip Cap/flashing at window header with 7/16" exposed flange

Siding Type: 5/16" fiber cement panel

Part Number: FbC-Slim Drip Cap



Horizontal Design Options



FbC-Starter



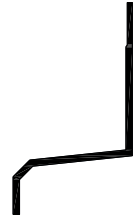
FbC-P-Hoz



FbC-P-Reveal Hoz



FbC-Drip Cap



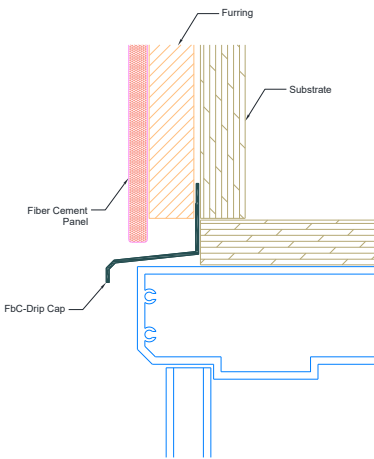
FbC-Slim Drip Cap

Horizontal Architectural Details

Description: Drip Cap/flashing at door header with 3/4" furring and 3/8" exposed flange

Siding Type: 5/16" fiber cement panel

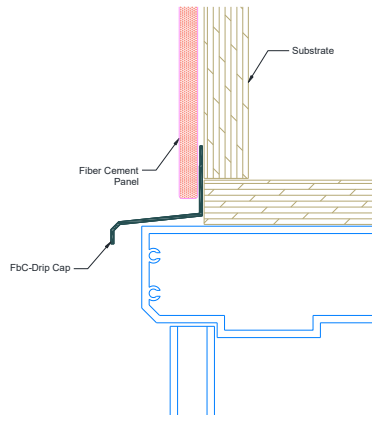
Part Number: FbC-Drip Cap



Description: Drip Cap/flashing at door header with 3/8" exposed flange

Siding Type: 5/16" fiber cement panel

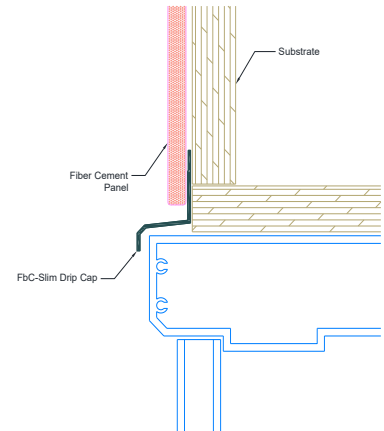
Part Number: FbC-Drip Cap



Description: Drip Cap/flashing at door header with 7/16" exposed flange

Siding Type: 5/16" fiber cement panel

Part Number: FbC-Slim Drip Cap





Architectural Details

Vertical Applications



www.orstedusa.com

Vertical Design Options



FbC-P-Reveal Vert



FbC-P-H Vert



FbC-P-Snap Reveal Vert



FbC-T-Reveal Vert TR

Vertical Architectural Details

This section highlights Orsted's fiber cement trims and reveals in standard vertical conditions. We have made assumptions that are based on a number of standard project conditions that are not all encompassing and can be customized on a project basis.

We have shown mid-panel section details for the vertical components. Typically, a vertical trim will terminate into a horizontal or terminating trim. The horizontal trim is designed to overlap the face of vertical components providing consistent and clean joints at intersecting conditions.

Orsted believes that the impact of an error increases substantially as an error moves from the digital environment to the jobsite. We would love to help save your project **Time and Money** by consulting on project specific details and conditions.



Vertical Design Options



FbC-P-Reveal Vert



FbC-P-H Vert



FbC-P-Snap Reveal Vert



FbC-T-Reveal Vert TR

Vertical Architectural Details

Description: Vertical with 1/2" reveal and 3/8" exposed flanges

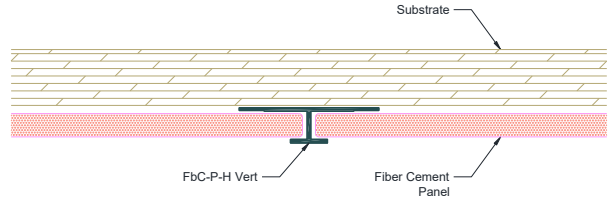
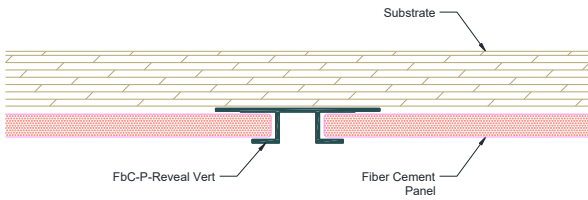
Siding Type: 5/16" fiber cement panel

Part Number: FbC-P-Reveal Vert

Description: Vertical with 1/2" exposed flange

Siding Type: 5/16" fiber cement panel

Part Number: FbC-P-H Vert



Vertical Design Options



FbC-P-Reveal Vert



FbC-P-H Vert



FbC-P-Snap Reveal Vert



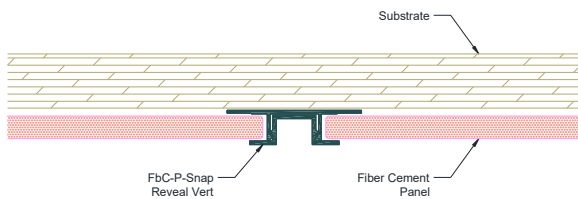
FbC-T-Reveal Vert TR

Vertical Architectural Details

Description: Two-piece vertical with 1/2" reveal and 3/8" exposed flanges

Siding Type: 5/16" fiber cement panel

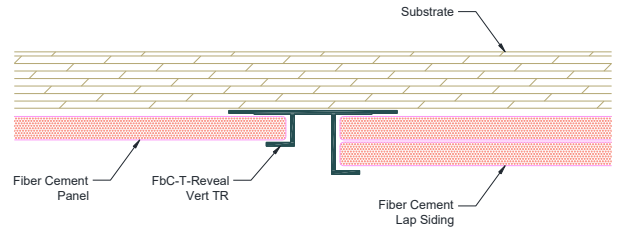
Part Number: FbC-P-Snap Reveal Vert



Description: Vertical transition with 1/2" reveal and 3/8" exposed flanges

Siding Type: 5/16" fiber cement panel to lap siding

Part Number: FbC-T-Reveal Vert TR





Architectural Details

Terminating Applications



www.orstedusa.com

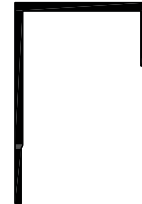
Terminating Design Options



FbC-P-J Channel



FbC-P-F Channel



FbC-L-J Channel Lap

Terminating Architectural Details

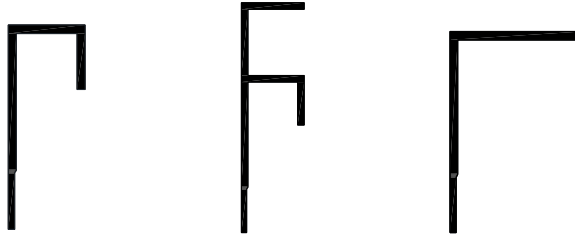
This section highlights Orsted's fiber cement trims and reveals in a variety of standard terminating conditions. We have made assumptions that are based on a number of standard project conditions that are not all encompassing and can be customized on a project basis.

We have primarily shown terminating details in three separate conditions: inset, aligned, and projecting. These details are intended to demonstrate that all three conditions are possible. We have not shown inset or projecting dimensions, as they are typically project specific.

Orsted believes that the impact of an error increases substantially as an error moves from the digital environment to the jobsite. We would love to help save your project **Time and Money** by consulting on project specific details and conditions.



Terminating Design Options



FbC-P-J Channel

FbC-P-F Channel

FbC-L-J Channel Lap

Terminating Architectural Details

Description: Aligned termination with 3/8" exposed flange

Siding Type: 5/16" fiber cement panel

Part Number: FbC-P-J Channel

Description: Aligned termination with 1/2" reveal and 3/8" exposed flange

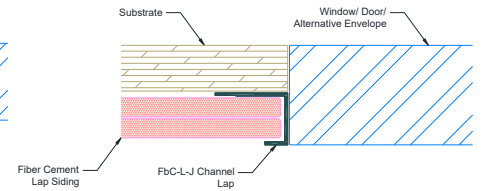
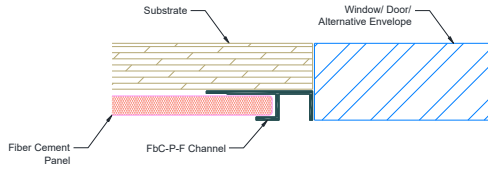
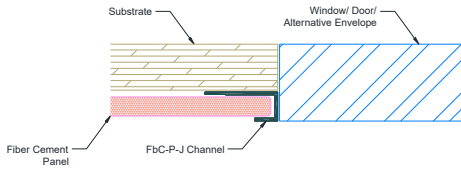
Siding Type: 5/16" fiber cement panel

Part Number: FbC-P-F Channel

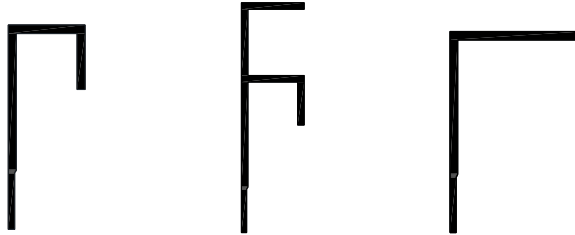
Description: Aligned termination with 3/8" exposed flange

Siding Type: 5/16" fiber cement lap siding

Part Number: FbC-L-J Channel Lap



Terminating Design Options



FbC-P-J Channel

FbC-P-F Channel

FbC-L-J Channel Lap

Terminating Architectural Details

Description: Projecting termination with 3/8" exposed flange

Siding Type: 5/16" fiber cement panel

Part Number: FbC-P-J Channel

Description: Projecting termination with 1/2" reveal and 3/8" exposed flange

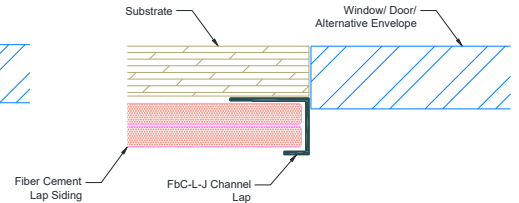
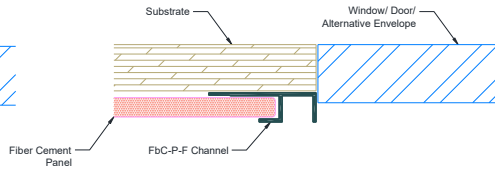
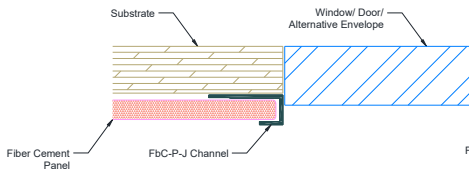
Siding Type: 5/16" fiber cement panel

Part Number: FbC-P-F Channel

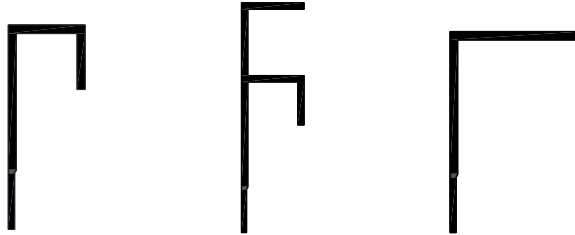
Description: Projecting termination with 3/8" exposed flange

Siding Type: 5/16" fiber cement lap siding

Part Number: FbC-L-J Channel Lap



Terminating Design Options



FbC-P-J Channel

FbC-P-F Channel

FbC-L-J Channel Lap

Terminating Architectural Details

Description: Inset termination with 3/8" exposed flange

Siding Type: 5/16" fiber cement panel

Part Number: FbC-P-J Channel

Description: Inset termination with 1/2" reveal and 3/8" exposed flange

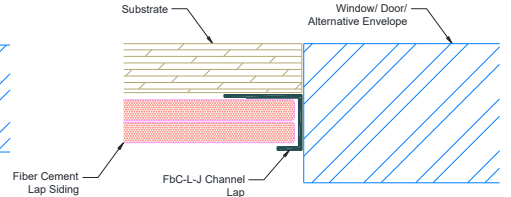
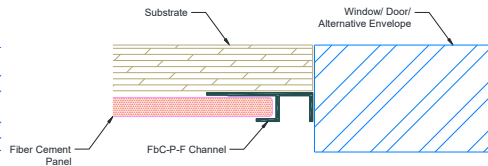
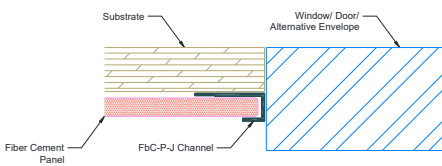
Siding Type: 5/16" fiber cement panel

Part Number: FbC-P-F Channel

Description: Inset termination with 3/8" exposed flange

Siding Type: 5/16" fiber cement lap siding

Part Number: FbC-L-J Channel Lap



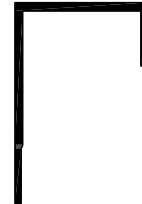
Terminating Design Options



FbC-P-J Channel



FbC-P-F Channel



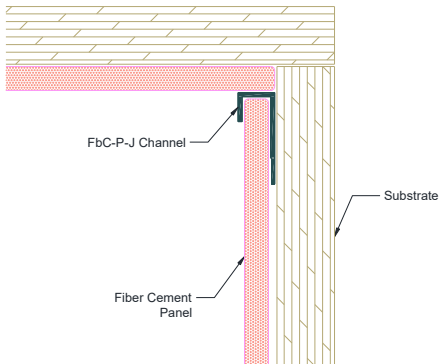
FbC-L-J Channel Lap

Terminating Architectural Details

Description: Soffit transition with 3/8" exposed flange

Siding Type: 5/16" fiber cement panel

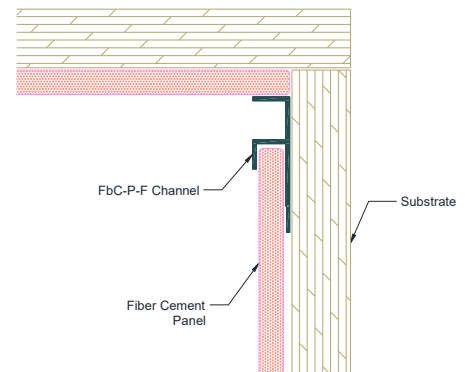
Part Number: FbC-P-J Channel



Description: Soffit transition with 1/2" reveal and 3/8" exposed flange

Siding Type: 5/16" fiber cement panel

Part Number: FbC-P-F Channel





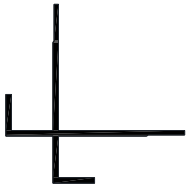
Architectural Details

Outside Corner Applications



www.orstedusa.com

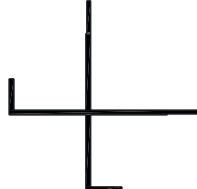
Outside Corner Design Options



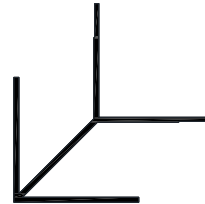
FbC-P-X OSC



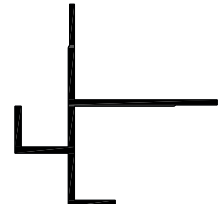
FbC-P-Captured OSC



FbC-L-X OSC Lap



FbC-L-Captured OSC Lap



FbC-T-X OSC TR

Outside Corner Architectural Details

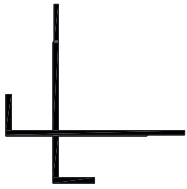
This section highlights Orsted’s fiber cement trims and reveals in a variety of standard outside corner conditions. We have made assumptions that are based on a number of standard project conditions that are not all encompassing and can be customized on a project basis.

We have primarily shown conditions at standard 90 degree outside corners. However, we have also shown non-standard obtuse corners that can be achieved by using a two-piece assembly. Project specific custom extrusions are possible and can be cost effective in certain scenarios. The Orsted team would be happy to provide consultation around project specific custom trims and reveals.

Orsted believes that the impact of an error increases substantially as an error moves from the digital environment to the jobsite. We would love to help save your project **Time and Money** by consulting on project specific details and conditions.



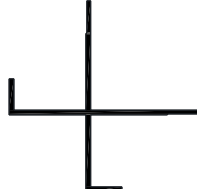
Outside Corner Design Options



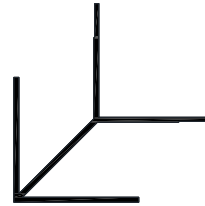
FbC-P-X OSC



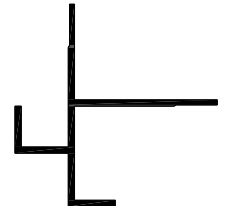
FbC-P-Captured OSC



FbC-L-X OSC Lap



FbC-L-Captured OSC Lap



FbC-T-X OSC TR

Outside Corner Architectural Details

Description: 90 degree outside corner with 3/8" exposed flanges

Siding Type: 5/16" fiber cement panel

Part Number: FbC-P-X OSC

Description: 90 degree outside corner with 3/4" exposed flanges

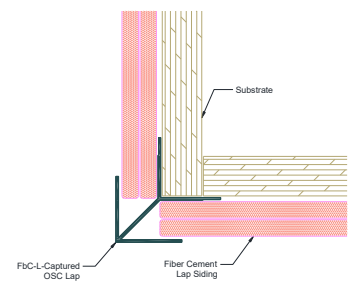
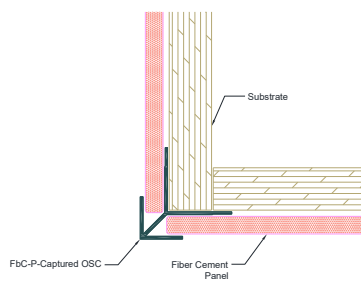
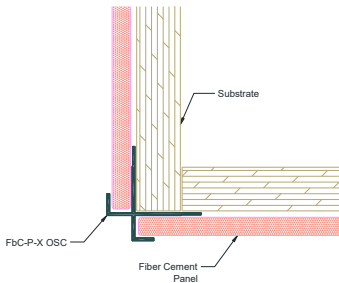
Siding Type: 5/16" fiber cement panel

Part Number: FbC-P-Captured OSC

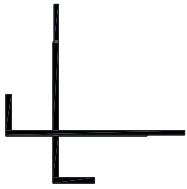
Description: 90 degree outside corner with 1-1/4" exposed flanges

Siding Type: 5/16" fiber cement lap siding

Part Number: FbC-L-Captured OSC Lap



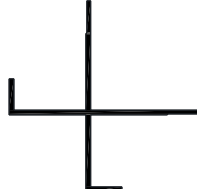
Outside Corner Design Options



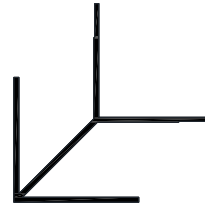
FbC-P-X OSC



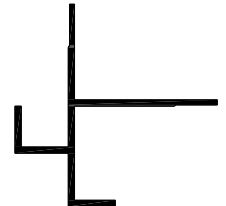
FbC-P-Captured OSC



FbC-L-X OSC Lap



FbC-L-Captured OSC Lap



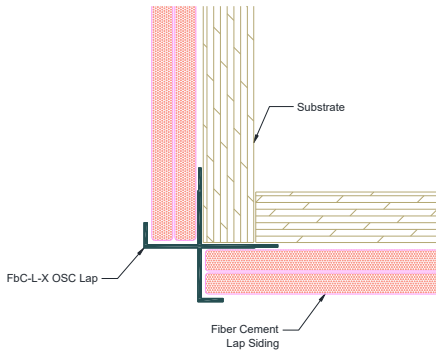
FbC-T-X OSC TR

Outside Corner Architectural Details

Description: 90 degree outside corner with 3/8" exposed flanges

Siding Type: 5/16" fiber cement lap siding

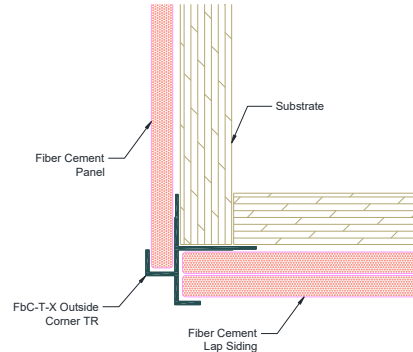
Part Number: FbC-L-X OSC Lap



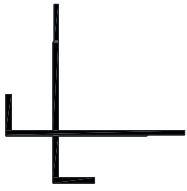
Description: 90 degree outside corner with 3/8" exposed flanges

Siding Type: 5/16" fiber cement panel to lap siding

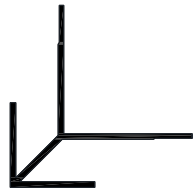
Part Number: FbC-T-X OSC TR



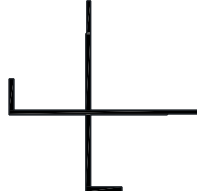
Outside Corner Design Options



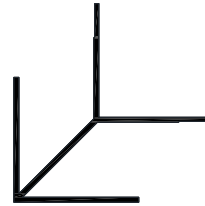
FbC-P-X OSC



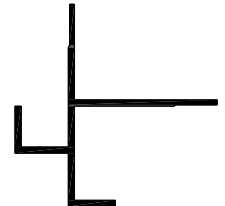
FbC-P-Captured OSC



FbC-L-X OSC Lap



FbC-L-Captured OSC Lap



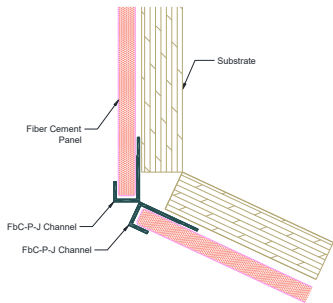
FbC-T-X OSC TR

Outside Corner Architectural Details

Description: Obtuse outside corner with 3/8" exposed flanges

Siding Type: 5/16" fiber cement panel

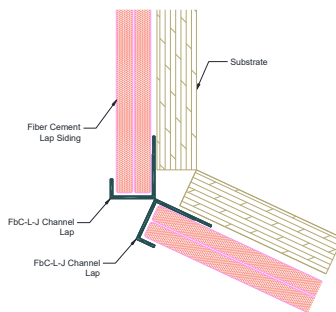
Part Number: FbC-P-J Channel



Description: Obtuse outside corner with 3/8" exposed flanges

Siding Type: 5/16" fiber cement lap siding

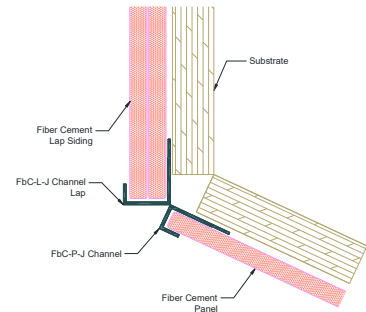
Part Number: FbC-L-J Channel Lap



Description: Obtuse outside corner transition with 3/8" exposed flanges

Siding Type: 5/16" fiber cement panel to lap siding

Part Number: FbC-P-J Channel, FbC-L-J Channel Lap



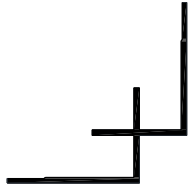


Architectural Details

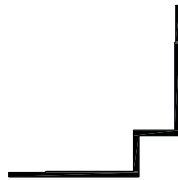
Inside Corner Applications



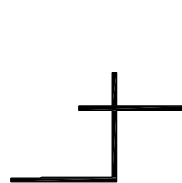
Inside Corner Design Options



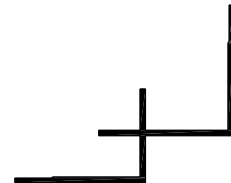
FbC-P-Captured ISC



FbC-P-Sharp ISC



FbC-L-Captured ISC Lap



FbC-T-Captured ISC TR

Inside Corner Architectural Details

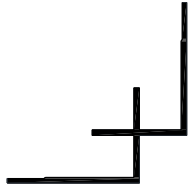
This section highlights Orsted's fiber cement trims and reveals in a variety of standard inside corner conditions. We have made assumptions that are based on a number of standard project conditions that are not all encompassing and can be customized on a project basis.

We have primarily shown conditions at standard 90 degree inside corners. However, we have also shown non-standard corners that can be achieved by using a two-piece assembly. Project specific custom extrusions are possible and can be cost effective in certain scenarios. The Orsted team would be happy to provide consultation around project specific custom trims and reveals.

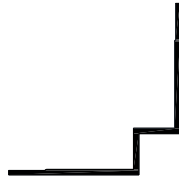
Orsted believes that the impact of an error increases substantially as an error moves from the digital environment to the jobsite. We would love to help save your project **Time and Money** by consulting on project specific details and conditions.



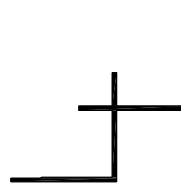
Inside Corner Design Options



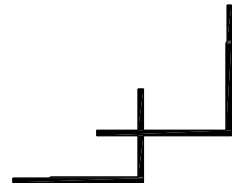
FbC-P-Captured ISC



FbC-P-Sharp ISC



FbC-L-Captured ISC Lap



FbC-T-Captured ISC TR

Inside Corner Architectural Details

Description: 90 degree inside corner with 3/8" exposed flanges

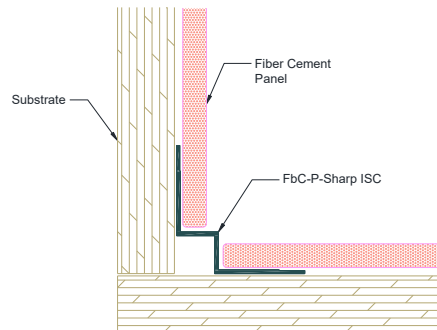
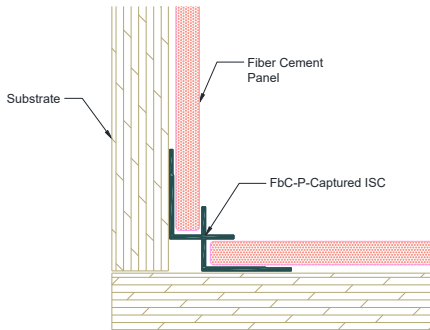
Siding Type: 5/16" fiber cement panel

Part Number: FbC-P-Captured ISC

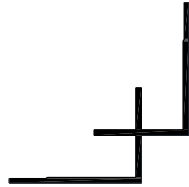
Description: 90 degree inside corner without exposed flanges

Siding Type: 5/16" fiber cement panel

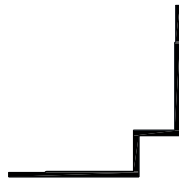
Part Number: FbC-P-Sharp ISC



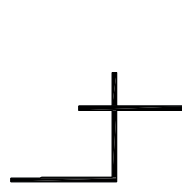
Inside Corner Design Options



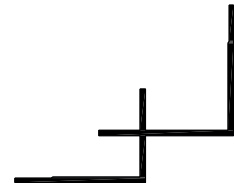
FbC-P-Captured ISC



FbC-P-Sharp ISC



FbC-L-Captured ISC Lap



FbC-T-Captured ISC TR

Inside Corner Architectural Details

Description: 90 degree inside corner with 3/8" exposed flanges

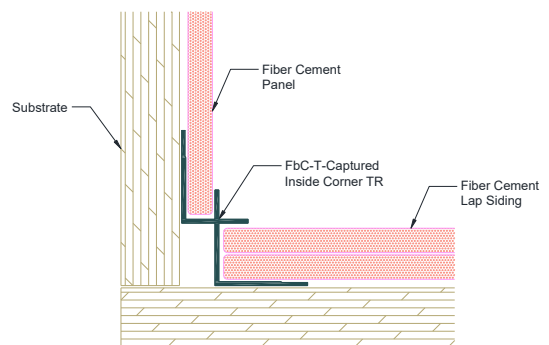
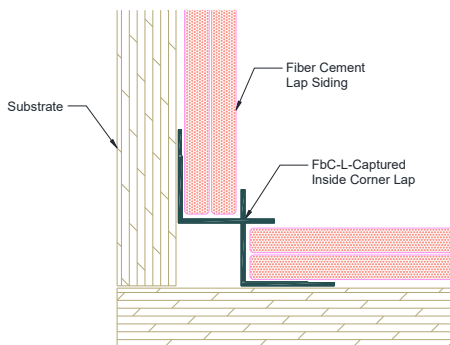
Siding Type: 5/16" fiber cement lap siding

Part Number: FbC-L-Captured ISC Lap

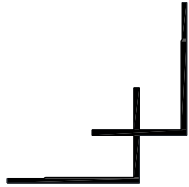
Description: 90 degree inside corner transition with 3/8" exposed flanges

Siding Type: 5/16" fiber cement panel to lap siding

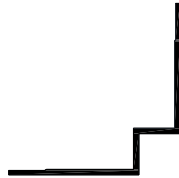
Part Number: FbC-T-Captured ISC TR



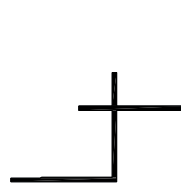
Inside Corner Design Options



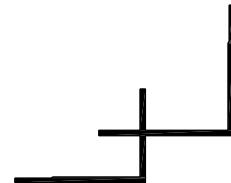
FbC-P-Captured ISC



FbC-P-Sharp ISC



FbC-L-Captured ISC Lap



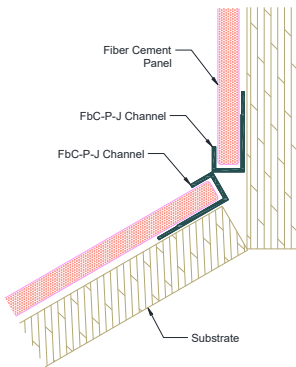
FbC-T-Captured ISC TR

Inside Corner Architectural Details

Description: Non-standard inside corner with 3/8" exposed flanges

Siding Type: 5/16" fiber cement panel

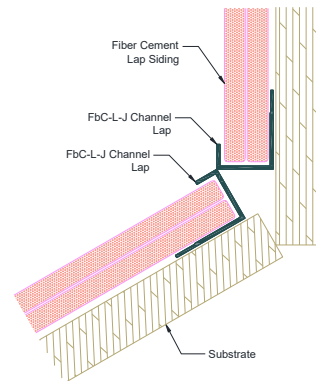
Part Number: FbC-P-J Channel



Description: Non-standard inside corner with 3/8" exposed flanges

Siding Type: 5/16" fiber cement lap siding

Part Number: FbC-L-J Channel Lap





Architectural Finishes








www.orstedusa.com

Available Architectural Finishes

Field Paintable
Powder Coated
Custom Colors*

Clear Anodized
Color Anodized*
Black Anodized*

Powder Coated Design Options

Accessible Beige		Downing Slate		Navajo Beige	
Aged Pewter		Evening Blue		Naval	
Agreeable Gray		Evergreen Fog		Niebla Azul	
Alabaster		Gale Force		Night Gray	
Analytical Gray		Gray Clouds		Olive Grove	
Anonymous		Gray Slate		Pearl Gray	
Arctic White		Iron Gray		Peppercorn	
Black Fox		Iron Ore		Pewter Tankard	
Boothbay Blue		Khaki Brown		Pure White	
Cobble Stone		Light Mist		Rich Espresso	
Connected Gray		Macadamia		Timber Bark	
Countrylane Red		Midnight Black		Toile Red	
Creamy		Monterey Taupe		Tricorn Black	
Deep Ocean		Morris Room Grey		Urbane Bronze	
		Mountain Sage		Virtual Taupe	

Note: * Please contact Orsted for project specific colors.

Note: Representation of individual colors may vary based on display settings. For accurate representation of the finished product, please contact Orsted.

